



BZP SERIES

Zinc-plated, pressed steel housing with sealed double ball race in swivelhead.

Available with top plate fixing.

WHEEL CODE		NY		ER		CR		PT		
Wheel diam (mm)	Swivel or fixed	Tread width (mm)	Overall height (mm)	Plate type	Swivel radius (mm)	Bearing type	White nylon	Black elastic rubber on aluminium	Black elastic rubber on cast iron	Brown polyurethane on cast iron
125	S	50 PT=40 NY=45	164	A	118 150*	BZP125NY 750kg	-	-	-	-
						BZP125NYB 750kg	-	BZP125CRB 300kg	-	
						BZP125NYBJ 750kg	BZP125ERBJ 225kg	BZP125CRBJ 300kg	BZP125PTBJ 400kg	
125	F	50 PT=40 NY=45	164	A	-	BZPF125NY 750kg	-	-	-	-
						BZPF125NYB 750kg	-	BZPF125CRB 300kg	-	
						BZPF125NYBJ 750kg	BZPF125ERBJ 225kg	BZPF125CRBJ 300kg	BZPF125PTBJ 400kg	
150	S	50 NY=45	194	A	130 150*	BZP150NY 800kg	-	-	-	-
						BZP150NYB 800kg	-	BZP150CRB 300kg	BZP150PTB 750kg	
						BZP150NYBJ 800kg	-	BZP150CRBJ 300kg	BZP150PTBJ 750kg	
150	F	50 NY=45	194	A	-	BZPF150NY 800kg	-	-	-	-
						BZPF150NYB 800kg	-	BZPF150CRB 300kg	BZPF150PTB 750kg	
						BZPF150NYBJ 800kg	-	BZPF150CRBJ 300kg	BZPF150PTBJ 750kg	
160	S	50	199	A	135 150*	-	-	-	-	-
						-	-	-	-	
						-	BZP160ERBJ 350kg	-	-	
160	F	50	199	A	-	-	-	-	-	-
						-	-	-	-	
						-	BZPF160ERBJ 350kg	-	-	
200	S	50 NY=45	239	A	155	BZP200NY 800kg	-	-	-	-
						BZP200NYB 800kg	-	BZP200CRB 450kg	BZP200PTB 800kg	
						BZP200NYBJ 800kg	BZP200ERBJ 450kg	BZP200CRBJ 450kg	BZP200PTBJ 800kg	
200	F	50 NY=45	239	A	-	BZPF200NY 800kg	-	-	-	-
						BZPF200NYB 800kg	-	BZPF200CRB 450kg	BZPF200PTB 800kg	
						BZPF200NYBJ 800kg	BZPF200ERBJ 450kg	BZPF200CRBJ 450kg	BZPF200PTBJ 800kg	
250	S	50	292	A	180	BZP250NY 800kg	-	-	-	-
						BZP250NYB 800kg	BZP250ERBJ 500kg	BZP250CRBJ 500kg	BZP250PTBJ 800kg	
						BZP250NYBJ 800kg	BZP250ERBJ 500kg	BZP250CRBJ 500kg	BZP250PTBJ 800kg	
250	F	50	292	A	-	BZPF250NY 800kg	-	-	-	-
						BZPF250NYB 800kg	-	-	-	
						BZPF250NYBJ 800kg	BZPF250ERBJ 500kg	BZPF250CRBJ 500kg	BZPF250PTBJ 800kg	

Braked castors (swivel and wheelbrakes) add to code: **SWB**

* swivel radius when brakes fitted

WHEEL BEARING KEY

- Plain bore
- Needle roller
- Ball journal

AVAILABLE WHEEL TYPES (for full specs refer to pages indicated)



p79

p92

p93

p99

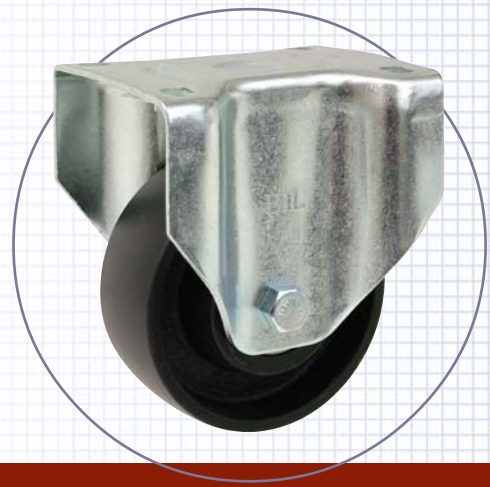
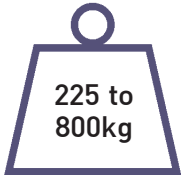
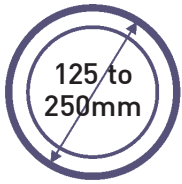
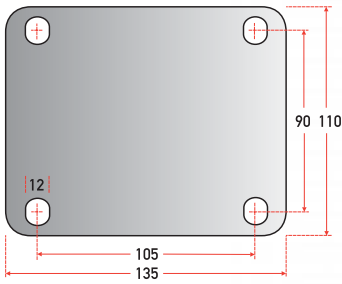


PLATE TYPES AND DIMENSIONS (mm)

Type A



- Nutted kingpin swivel head for added strength

