

80-90kg



BZC SERIES

Zinc-plated, pressed steel housing with sealed double ball race in swivelhead.

Available with top plate or single bolthole fixing.

BZC SERIES INSTITUTIONAL

Wheel diam or (mm)	Swivel or Fixed	Tread width (mm)	Overall height (mm)	Plate type	Swivel radius (mm)	Bearing type	Grey Thermoplastic	Grey vulcanised Thermoplastic	Grey rubber
--------------------	-----------------	------------------	---------------------	------------	--------------------	--------------	--------------------	-------------------------------	-------------

100	S	32	135	A	88		BZCL100TPR 80kg	BZCL100VGR 80kg	—
					118*		BZCL100TPRB 80kg	BZCL100VGRBJ 80kg	BZCL100GRBJ 80kg
100	S	32	135	B	88		BZC100TPR 80kg	BZC100VGR 80kg	—
					118*		BZC100TPRB 80kg	BZC100VGRBJ 80kg	BZC100GRBJ 80kg
125	S	32	160	A	88		BZCL125TPR 90kg	BZCL125VGR 90kg	—
					125*		BZCL125TPRB 90kg	BZCL125VGRBJ 90kg	BZCL125GRBJ 90kg
125	S	32	160	B	88		BZC125TPR 90kg	BZC125VGR 90kg	—
					125*		BZC125TPRB 90kg	BZC125VGRBJ 90kg	BZC125GRBJ 90kg

Braked castors (swivel and wheelbrakes)

add to code: **SWB**

Single bolthole castor (10mm)

add to code: **BH10**

Single bolthole castor (12mm)

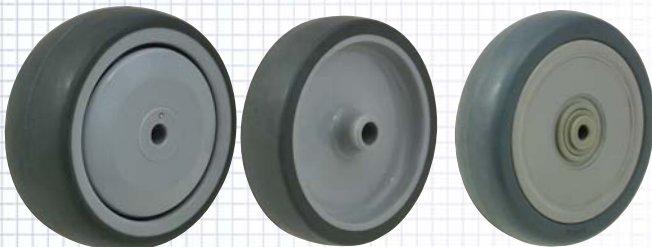
add to code: **BH12**

* Swivel radius when brakes are fitted

WHEEL BEARING KEY

Plain bore
 Ball journal

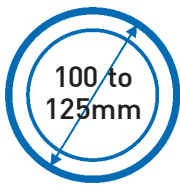
AVAILABLE WHEEL TYPES (for full wheel specifications refer to pages indicated)



p85

p85

p84



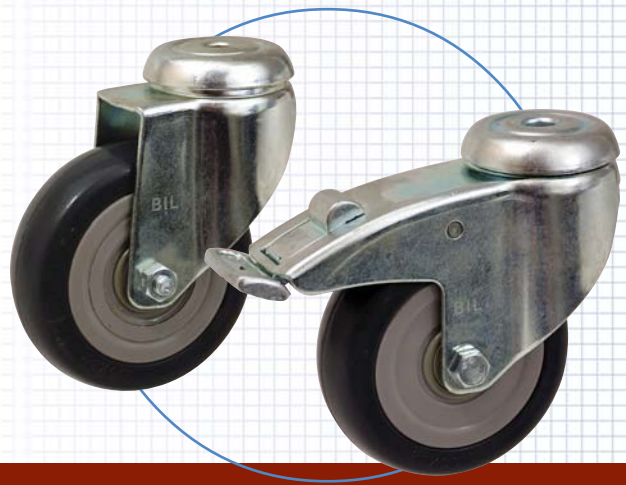
Bolt hole



80 to
90kg



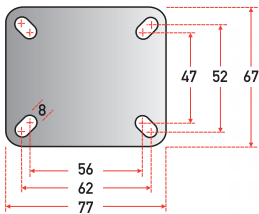
Plate
fixing



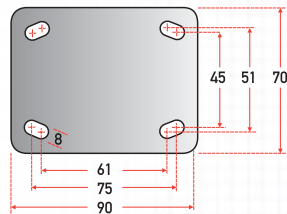
80-90kg

PLATE TYPES AND DIMENSIONS (mm)

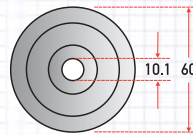
Type A



Type B

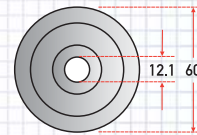


Single bolthole add to code: BH10



wheel diameters... 100 125

Single bolthole add to code: BH12



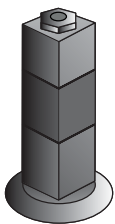
wheel diameters... 100 125

Alternative fittings SPRING PLUGS



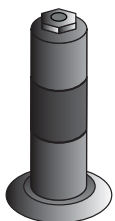
Description	Product code
<ul style="list-style-type: none"> For mobile steps Fitted with a stepped plug 136mm long Fitted into a 25.4mm (1") O.D. outer Sleeve compresses on loading Spring weight 16kg 	BZDSPR16KG

SQUARE EXPANDERS



Tube section	Range for inside diameter of tube (mm)	Plug length (mm)	Plug material	Product code
Square	21 to 24	60	Rubber & nylon	BZAEXS21
		90		BZAEXS21XL
	26 to 29	60		BZAEXS26
		90		BZAEXS26XL
	31 to 34	60		BZAEXS31
		90		BZAEXS31XL

ROUND EXPANDERS



Tube section	Range for inside diameter of tube (mm)	Plug length (mm)	Plug material	Product code
Round	19 to 22	60	Rubber & nylon	BZAEXR19
		90		BZAEXR19XL
	22 to 25	60		BZAEXR22
		90		BZAEXR22XL
	25 to 28	60		BZAEXR25
		90		BZAEXR25XL
	28 to 31	60		BZAEXR28
		90		BZAEXR28XL

For our full range of buffer wheels see page 113

